

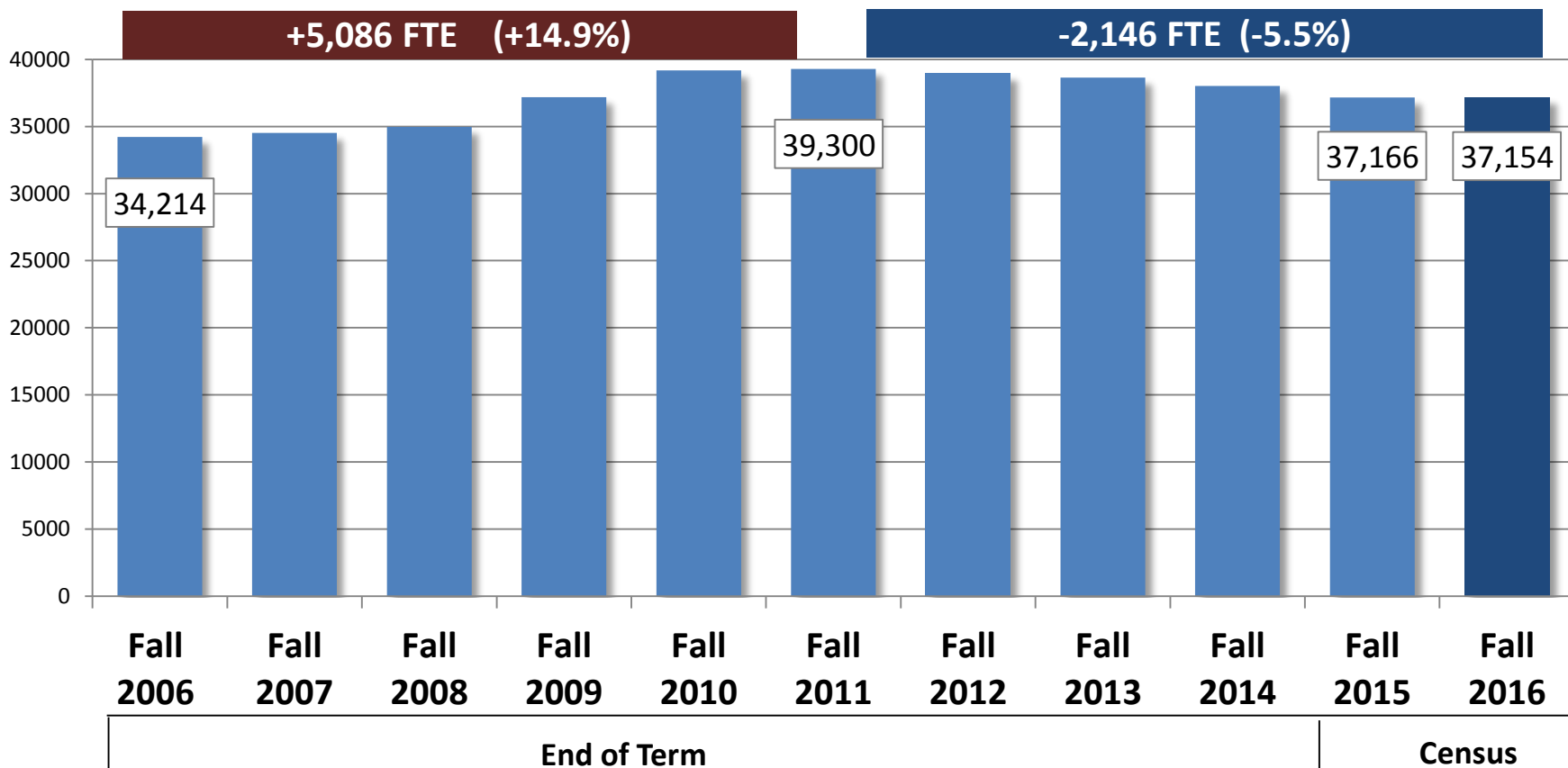


Fall 2016 Census Enrollment Report – 15th Day (preliminary)

Student FTE, 2006 to 2016

Fall Semesters, 15th Day Census (preliminary)

(includes CC's)



❖ Fall 2016 census enrollment is 12 FTE fewer than Fall 2015.



STUDENT FTE by Residency & Level

Residency & Level	15th Day Count		DIFF		
	Fall 2015	Fall 2016	#	%	
Resident Undergraduate	25,111	24,615	-496	-2.0%	↓
Resident Graduate	2,067	2,170	103	5.0%	↑
Non-resident Undergraduate	6,405	6,522	117	1.8%	↑
WUE	2,670	2,792	123	4.6%	↑
Non-resident Graduate	913	1,054	141	15.5%	↑
Total	37,166	37,154	-12	0.0%	—



STUDENT FTE by Residency & Level

Fall 06 to Fall 16

Residency & Level	10 year Comparison		DIFF		
	Fall 2006*	Fall 2016	#	%	
Resident Undergraduate	25,415	24,615	-800	-3.1%	↓
Resident Graduate	1,857	2,170	314	16.9%	↑
Non-resident Undergraduate	4,435	6,522	2,088	47.1%	↑
WUE	1,683	2,792	1,110	65.9%	↑
Non-resident Graduate	824	1,054	230	27.9%	↑
Total	34,214	37,154	2,940	8.6%	↑

*end of term



STUDENT FTE by Institution Type

Institution Type	15th Day Count		DIFF		
	Fall 2015	Fall 2016	#	%	
Flagship (UM & MSU)	23,048	23,295	247	1.1%	
4-year (UMW, Tech, MSUN, MSUB)	7,329	7,123	-206	-2.8%	
2-year Colleges (includes CC's)	6,788	6,736	-52	-0.8%	
Total	37,166	37,154	-12	0.0%	



STUDENT FTE by Institution Type

Fall 06 to Fall 16

Institution Type	10 year Comparison		DIFF	
	Fall 2006*	Fall 2016	#	%
Flagship (UM & MSU)	21,103	23,295	2,192	10.4%
4-year (UMW, Tech, MSUN, MSUB)	7,230	7,123	-107	-1.5%
2-year Colleges (includes CC's)	5,881	6,736	855	14.5%
Total	34,214	37,154	2,940	8.6%



*end of term



STUDENT FTE by Campus

CAMPUS	15th Day Count		DIFF		
	Fall 2015	Fall 2016	#	%	
MSU Bozeman	13,367	14,228	862	6.4%	↑
Gallatin College MSU	488	575	87	17.9%	↑
MSU Billings	2,711	2,508	-203	-7.5%	↓
City College at MSUB	769	775	6	0.8%	↑
MSU Northern	1,026	1,062	36	3.5%	↑
Great Falls College MSU	1,084	1,041	-44	-4.0%	↓
MSU Total	19,445	20,189	744	3.8%	↑



STUDENT FTE by Campus

CAMPUS	15th Day Count		DIFF		
	Fall 2015	Fall 2016	#	%	
UM Missoula	9,681	9,067	-614	-6.3%	↓
Missoula College UM	1,278	1,157	-121	-9.5%	↓
Montana Tech	2,260	2,135	-125	-5.5%	↓
Highlands College of MT Tech	364	344	-20	-5.4%	↓
UM Western	1,332	1,418	86	6.5%	↑
Helena College UM	859	842	-17	-2.0%	↓
UM Total	15,774	14,963	-811	-5.1%	↓



STUDENT FTE by Campus

CAMPUS	15th Day Count		DIFF	
	Fall 2015	Fall 2016	#	%
Dawson CC	224	216	-8	-3.5%
Flathead Valley CC	1,372	1,396	23	1.7%
Miles CC	350	390	40	11.5%
CC Total	1,946	2,002	56	2.9%





STUDENT FTE by Campus

Institution Type	10 year Comparison		DIFF	
	Fall 2006	Fall 2016	#	%
MSU Bozeman	10,443	14,228	3,786	36%
Gallatin College MSU	0	575	575	-
MSU Billings	3,226	2,508	-719	-22%
City College at MSUB	688	775	87	13%
MSU Northern	1,136	1,062	-74	-7%
Great Falls College MSU	1,135	1,041	-95	-8%
UM Missoula	10,660	9,067	-1,594	-15%
Missoula College UM	1,063	1,157	94	9%
MT Tech	1,773	2,135	362	20%
Highlands College of MT Tech	303	344	41	14%
UM Western	1,094	1,418	324	30%
Helena College UM	691	842	151	22%
Dawson CC	381	216	-165	-43%
Flathead Valley CC	1,164	1,396	231	20%
Miles CC	455	390	-65	-14%
TOTAL	34,214	37,154	2,940	9%



STUDENT PROFILE

15th Day Census (**HEADCOUNT**) Includes Community Colleges

Demographics	15th Day Count		DIFF	
	Fall 2015	Fall 2016	#	%
Total Headcount <small>(unduplicated)</small>	44,811	44,896	85	0.2%
1st-time Freshmen <small>(does not include early college students)</small>	7,296	7,507	211	2.9%
1st-time Freshmen, Residents Only	4,962	4,855	-107	-2.2%
< 18 years	1,926	2,433	507	26.3%
18-24 years	29,154	28,977	-177	-0.6%
25-49 years	12,555	12,407	-148	-1.2%
50+ years	1,176	1,079	-97	-8.2%





STUDENT PROFILE

15th Day Census (**HEADCOUNT**) Includes Community Colleges

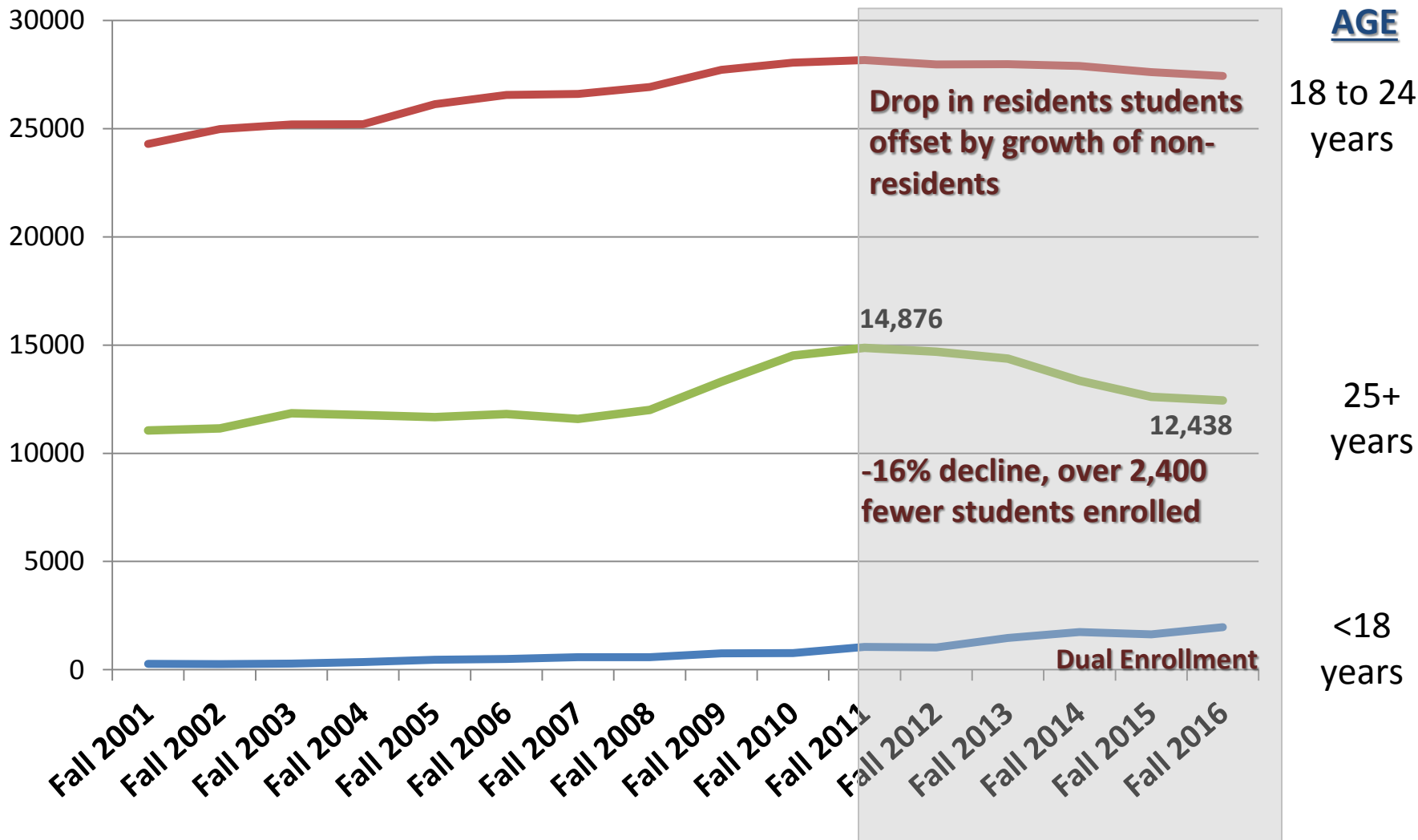
Demographics	15th Day Count		DIFF	
	Fall 2011	Fall 2016	#	%
Total Headcount <small>(unduplicated)</small>	47,507	44,896	-2,611	-5.5%
1st-time Freshmen <small>(does not include early college students)</small>	7,993	7,507	-486	-6.1%
1st-time Freshmen, Residents Only	5,888	4,855	-1,033	-17.5%
< 18 years	1,251	2,433	1,182	94.5%
18-24 years	29,864	28,977	-887	-3.0%
25-49 years	14,870	12,407	-2,463	-16.6%
50+ years	1,522	1,079	-443	-29.1%





Headcount by Age

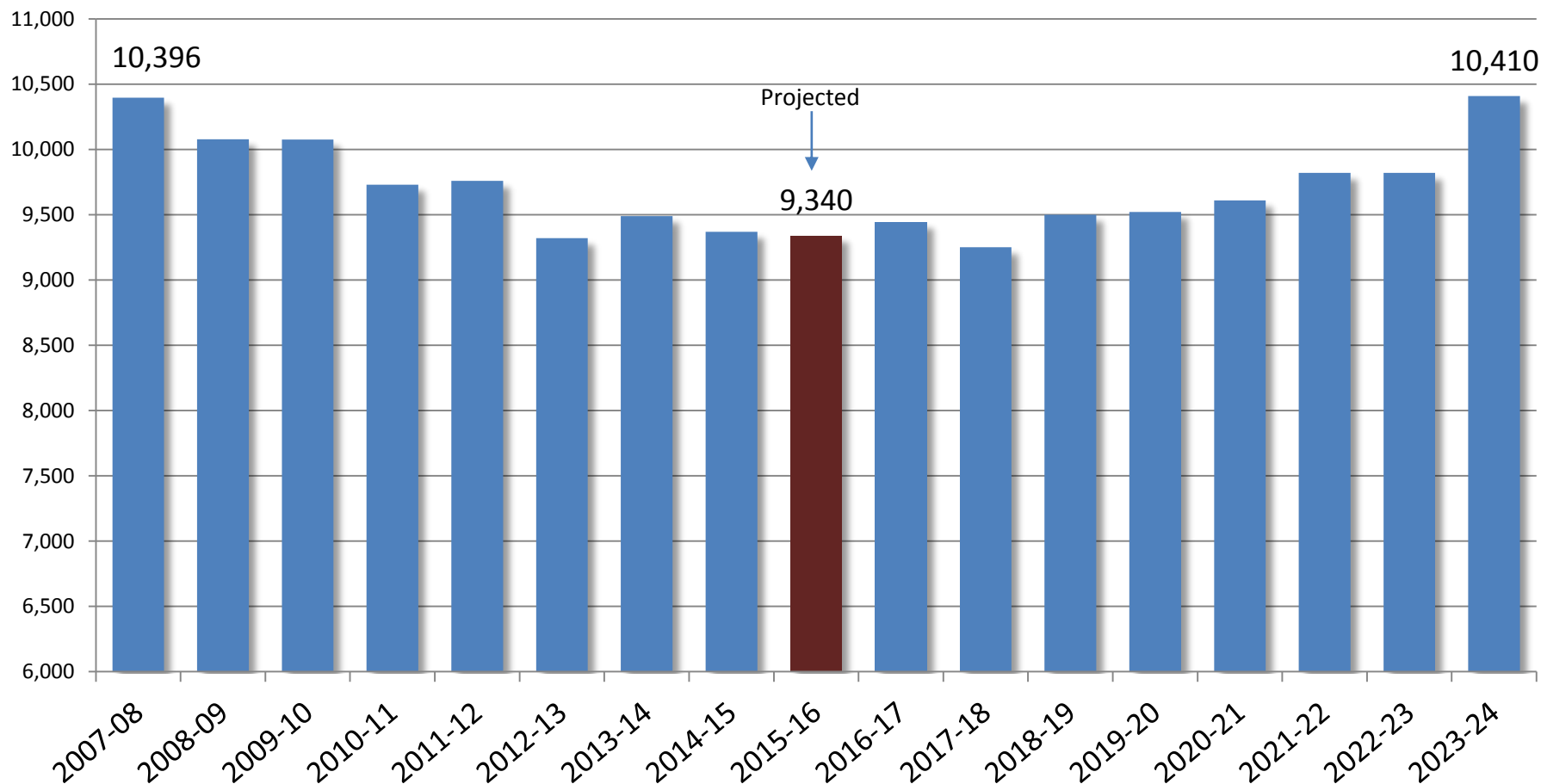
Unduplicated Headcount, Fall Census, (no CC's)





Montana Public High School Graduates

source: NCES, Projections of Education Statistics to 2024



Montana, as well as the entire nation, will experience a modest decline in the production of high school graduates due to a reduction in births in the wake of the Baby Boom Echo (WICHE). Beginning in 1991 the number of live births in the US declined slightly and remained lower for about 10 to 12 years.



Capture Rate - Recent MT High School Graduates

1st-time Resident Freshmen Entering the MUS, Fall Semesters

No CC's

Difference

First-time Freshmen Cohorts	Fall 2010	Fall 2011	Fall 2012	Fall 2013	Fall 2014	Fall 2015	Fall 2016	2010 to 2015	
								#	%
HS Graduating Class, MT Public Schools	10,037	9,704	9,723	9,345	9,474	9,346		-691	-7%
Recent MT Public HS Grads Enrolled in MUS <small>(attending immediately following graduation)</small>	3,538	3,447	3,418	3,368	3,540	3,409		-129	-4%
MUS Capture Rate <small>(% of recent MT HS grad attending MUS)</small>	35%	36%	35%	36%	37%	36%			1%

source: OPI GEMS (MUS/OPI data sharing)



MONTANA UNIVERSITY SYSTEM

First-time Freshmen, Residents Only

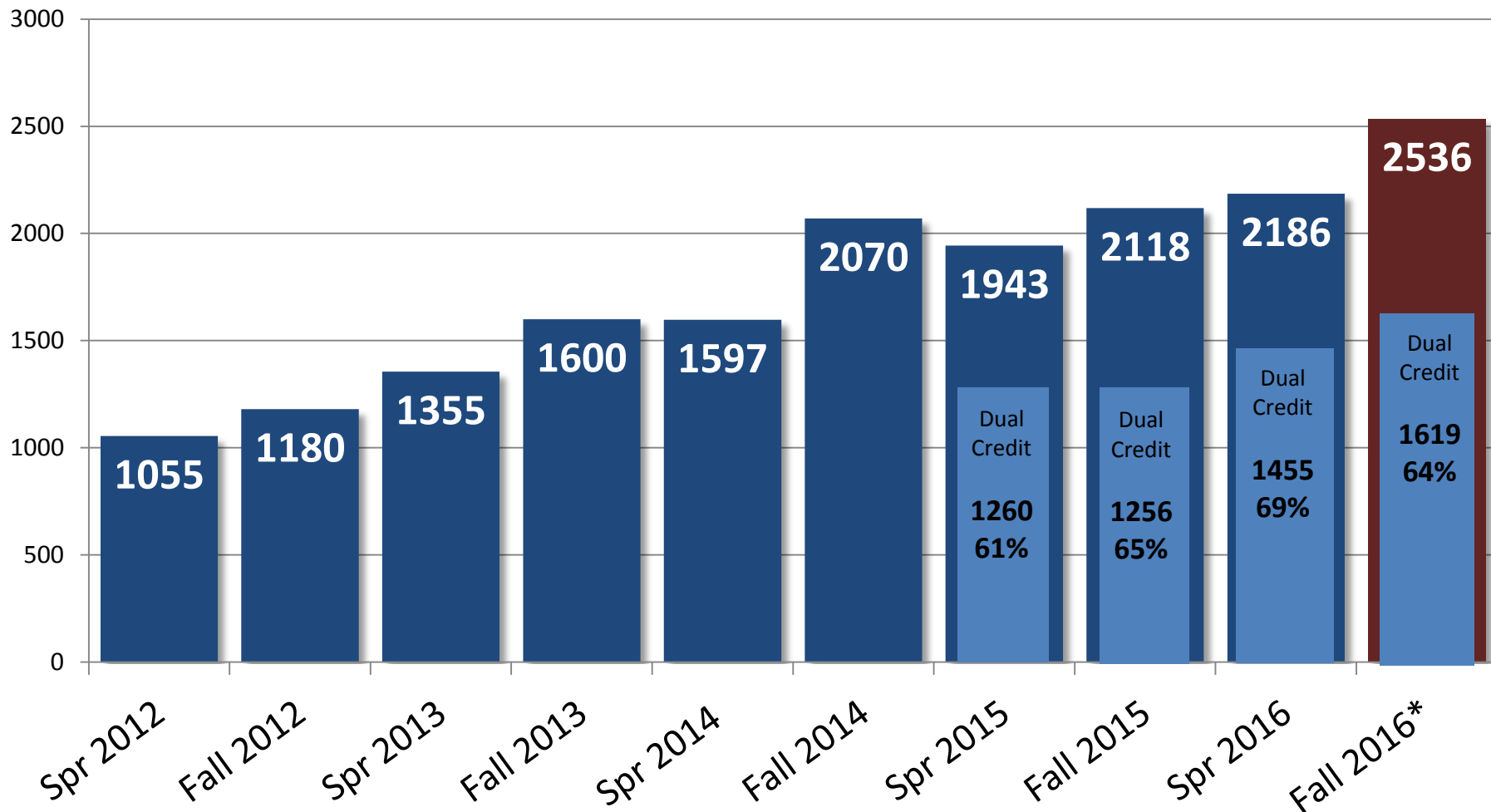
Fall Census, 2010 - 2016

Campus	Fall 2010	Fall 2011	Fall 2012	Fall 2013	Fall 2014	Fall 2015	Fall 2016	DIFF 2010 to 2016
MSU-Bozeman	1515	1542	1450	1570	1471	1449	1574	59
UM-Missoula	1187	1026	1006	945	985	914	756	-431
MSU-Billings	493	484	447	406	462	365	375	-118
Flathead CC	395	434	398	354	393	330	388	-7
Missoula College	632	549	461	413	382	317	293	-339
City College	372	288	277	267	215	238	221	-151
UM Western	184	203	213	180	184	222	237	53
Great Falls College	283	302	327	259	245	209	206	-77
MT Tech	246	241	205	211	226	201	149	-97
MSU Northern	222	201	178	184	170	188	197	-25
Helena College	308	267	227	235	226	187	218	-90
Highlands Collge	167	149	163	175	147	129	130	-37
Miles CC	106	97	83	78	76	99	108	2
Gallatin College	24	38	47	37	75	63	91	67
Dawson CC	114	67	69	77	60	50	54	-60
MUS Total	6248	5888	5551	5391	5317	4961	4997	-1251



Dual Enrollment Headcount

Unduplicated count of high school students enrolled in at least one college course



*represents "census" not EOT count



More Detail

Enrollment Trends

- [Fall Headcount](#) - Ten Year History
- [Fiscal Year FTE Report](#)
- [NEW Census Enrollment Tool](#)

Dashboards

- [Degrees Awarded](#) (MUS Degrees & Certificates Awarded)
- [Census Enrollments](#) (15th Day, Preliminary Student FTE)
- [Workforce Development](#) (MUS Grads Entering MT's Workforce)

Progress & Outcome Measures ([CCA Metrics](#))

- [Retention](#)
- [Degrees & Certificates](#)